



H. M. (Harry Marriott) Burton

H. M. Burton was one of Calgary, Alberta's most prolific real estate artists during the city's real estate boom of the 1910s.

By Rhys Stevens (rhys.stevens@uleth.ca), University of Lethbridge Library.
September 1, 2022

Artist H. M. Burton (1882-1979) was one of Calgary's most prolific commercial real estate artists at the height of the city's real estate boom in the early 1910s. He was a professionally trained artist and illustrator from England who lived in the city from 1910 to 1912. Burton left Calgary following the death of his young son and moved with his family to Australia where he continued his long and distinguished career as an artist.

About H. M. Burton

Harry Marriott Burton was born in Nottingham, England in 1882 and educated at the Nottingham School of Art. After serving an apprenticeship as a lithographic artist (aged 14), he worked at the *Guardian* newspaper as



a "figure" artist before leaving for
Calgary, Alberta, Canada in 1910. It was

Advertisement from *Calgary Herald* (1912, March
27). Illustration signed "Burton and Gove."

here that he became well-known among real estate men,
**painting pictures of places as they were, and as they were
destined to become.** (Source: Letter from H. M. Burton's sister
[1946], Nottingham City Museums and Galleries). During his
time in Calgary, Burton's non-real estate artwork included
landscape scenes of "Mount Sir Donald, Selkirk Mountains of
British Columbia" and "Cascade Mountain Banff."

According to the 1911 Census of Canada, Harry M. Burton
lived in Calgary, Alberta with his first wife Janet, son John L.
(age 4) and daughter Marion (age 1) who were both born in
England. Another son, Paul Hollingworth Burton was born in
Canada. H. M. Burton was employed as a designer and also
worked on his own account as an artist. In 1910, he reported
working an average of 54 hours per week as a designer/artist
and his total earnings were \$900.



Burton, H. M. (ca. 1910). *[Bird's-eye view of Calgary]*
[map]. (scale indeterminable). Calgary: Calgary
Engraving Co.

H. M. Burton's Real Estate Maps of Calgary and Vicinity

On August 16, 1910 the *Calgary Herald*
reported that, "Fifty thousand copies of
a birdseye view of the city and
surrounding country, as it will
probably appear in years to come,
were ordered [by the City of Calgary]
from H. M. Burton for \$2,000." Five
months later, in January 1911, the

Calgary Herald indicated that this panoramic view was
nearing completion and was soon to be published. An original
copy of Burton's impressive bird's-eye view map has survived
and is held at the William C. Wonders Map Collection,

University of Alberta in Edmonton.

Only two weeks later, another article, this one entitled, "A Birdseye View of Calgary and District" appeared in the August 22, 1910 issue of the *Calgary Herald*. It described a special map H. M. Burton was preparing for the city for advertising purposes. The map was to show "The physical features of the country west as far as Fernie and Cranbrook, east as far as Medicine Hat, north as far as Edmonton, and south to the boundary...." The map was completed in December 1910 as reported in the December 2 issue of the *Calgary Herald* and prints were to be made available. An original copy of the map and folder is held at the University of Calgary Archives and Special Collections.



Burton, H. M. (1911). *What sunny Alberta is like: A birdseye view of Calgary with the surrounding & tributary country & interesting facts concerning the banner province of Canada* [map]. Calgary: Calgary Engraving Co. [\[Link to high-resolution\]](#).

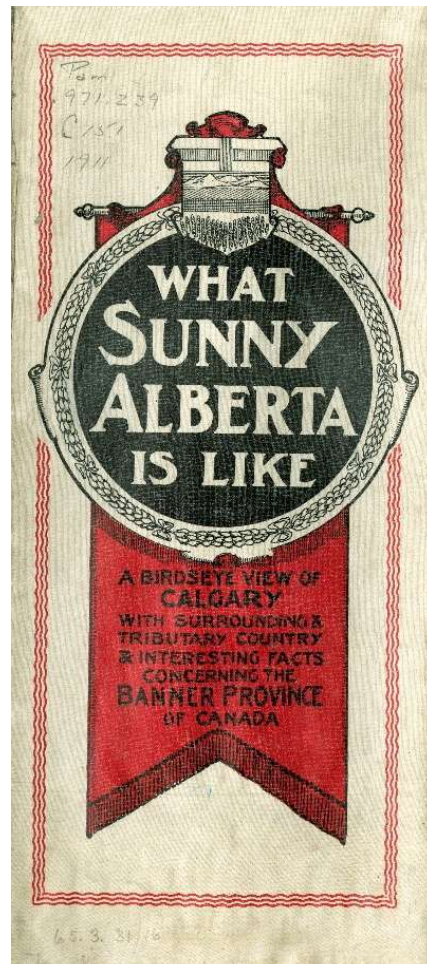
Photos, Illustrations, Adverts & Paintings



“Men inside a real estate sales office, possibly Calgary, Alberta”, 1911. [PA-4096-2]. The partially obscured map behind the man standing is *[Bird's-eye view of Calgary]* (1910) by H. M. Burton. The map directly above the seated man is *What Sunny Alberta is Like* (1911), also by H. M. Burton.



“Men inside a real estate sales office, possibly Calgary, Alberta”, 1911. [PA-4096-3]. The map closest to the man in rocking chair is *What Sunny Alberta is Like* (1911) by H. M. Burton. Above it and to the right is a map by H. M. Burton displaying the "City View" and "Gas City Addition" properties in Medicine Hat, Alberta.



This is the folder cover of H. M. Burton's map *What sunny Alberta is like: A bird's-eye view of Calgary* (1911).

Chestermere Calgary Suburban Railway Co.



What this railway means to Calgary is of untold value. The only watering place within easy reach of Calgary being only eight miles from the city.

Imagine the thousands that will patronize this pleasure resort and the swellest residential suburb of Calgary. I predict that the stock in this railway will be double its par value within three years. A limited number of shares only for sale. Over one hundred thousand dollars (\$100,000) subscribed already by local people. For all information, call at the company's office, 815A Centre Street, Calgary.

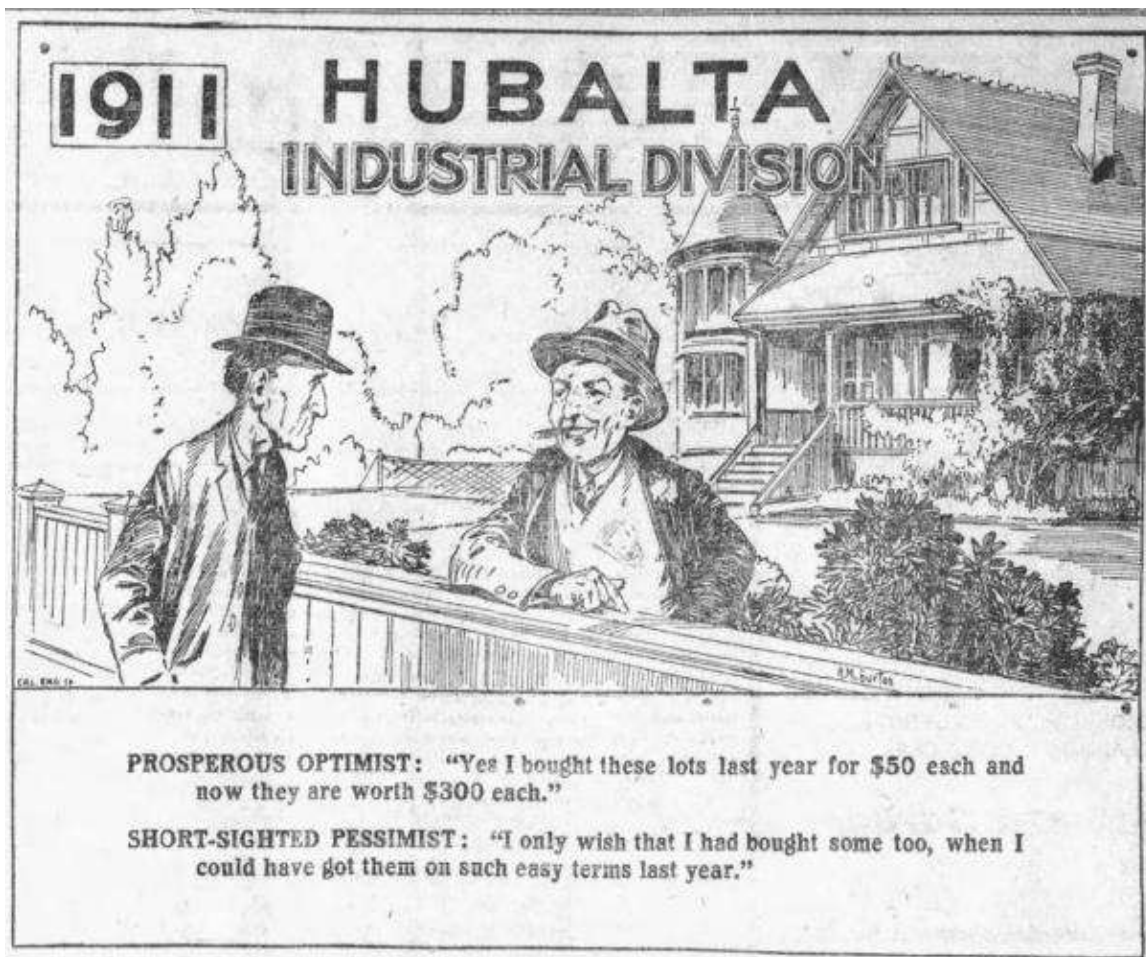
Road will be open for freight and passenger service on or before 1st May, 1912. Market garden stuff and milk will be delivered at Calgary's new market place by the carload every day in fresh condition.

J.A. McCullough
President and
General Manager
815A Centre St., Calgary

This advertisement for the Chestermere Calgary Suburban Railway Co. appeared in the *Calgary Herald* (1923, Sept. 23) and included a streetcar illustration by "H. M. B." aka H. M. Burton.



It most most likely H. M. Burton who produced this illustration for the Canada West Colonization Co. appearing in the *Calgary Herald* (1910, Oct. 22) to promote real estate sales in the Hubalta district.



This illustration by H. M. Burton appeared in a *Calgary Herald* (1910, Sept. 17) newspaper advert for the Hubalta Industrial Division development promoted by the Canada West Colonization Co.

GERMAN-AMERICAN COLONIZATION CO., LIMITED

THE above firm is one of the largest and most substantial real estate concerns in Western Canada. It is composed of John Steinbrecker, president and senior member, and A. Steinbrecker, secretary-treasurer. Their offices occupy a neat one-story building at 118 Ninth Avenue West, directly opposite the new C. P. R. Hotel.

This company was established and incorporated in 1906, and since then have sold 100,000 acres of land, and handled \$1,000,000



This illustration of John Steinbrecker's proposed La Grange development was signed by H. M. Burton. It appeared in the Merchants and Manufacturers Record publication entitled Calgary Sunny Alberta The Industrial Prodigy of the West (1911).



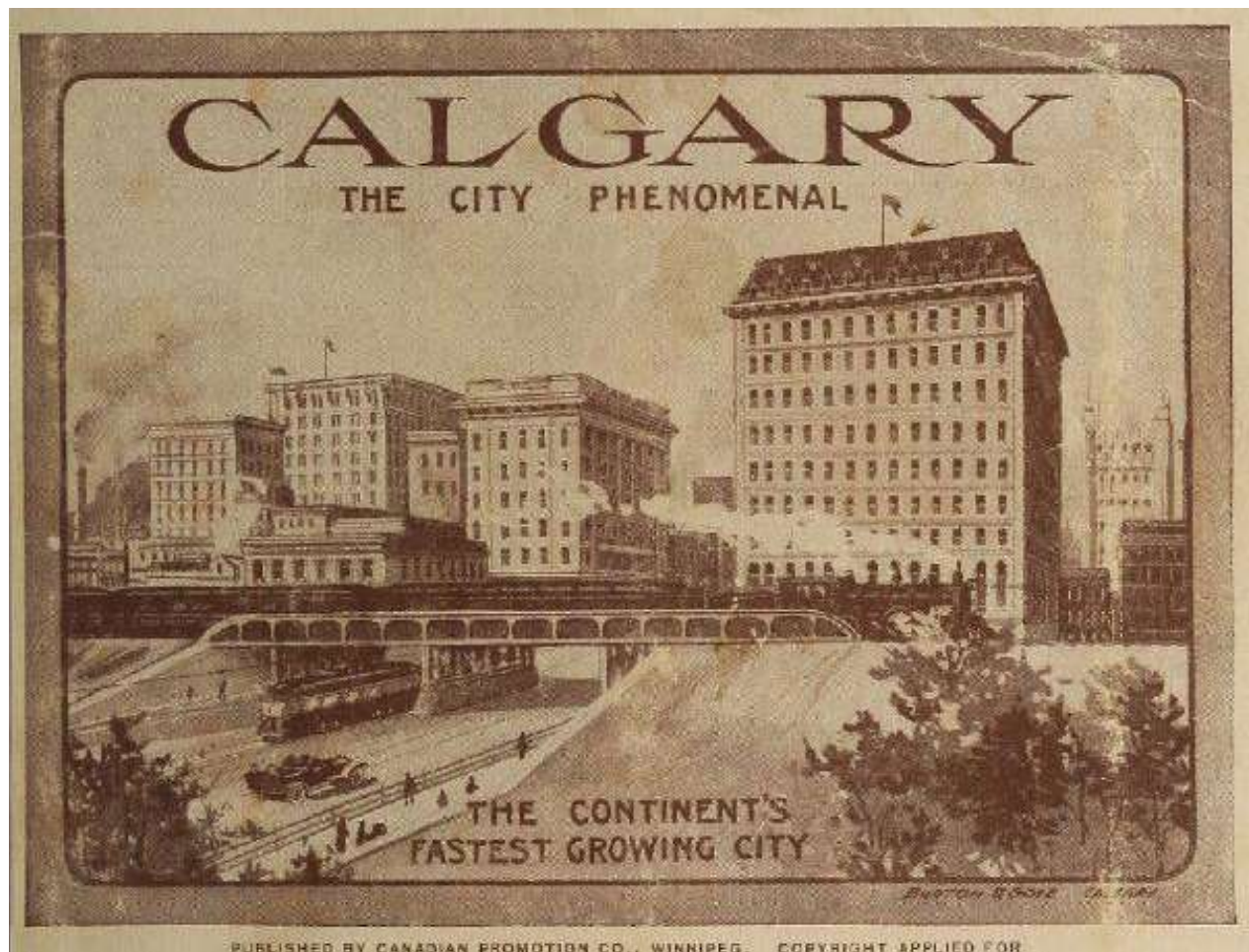
Classified advertisements like this one for landscape artists H. M. Burton and Eben F. (Frank) Gove (1885-1938) appeared in the Calgary Herald in 1912. Gove was an American who eventually moved back to Idaho.



This illustration, *Calgary The Distributing Centre of Alberta*, by Burton & Gove appeared as a section heading within the *Calgary Herald* (1912, April 10).



This illustration, *News of the Automobile World*, by Burton & Gove appeared as a section heading within the *Calgary Herald* (1912, April 6).



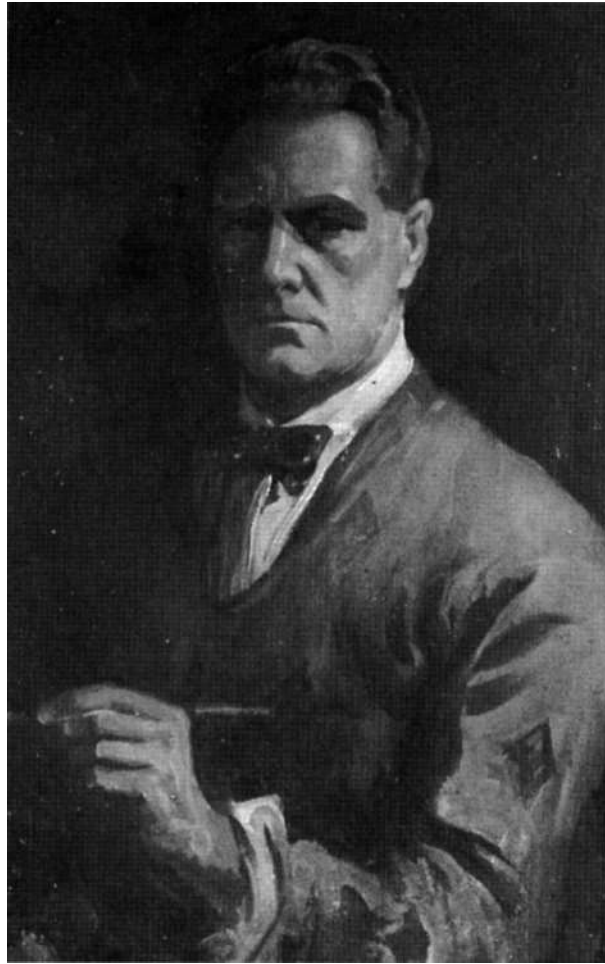
An illustration by Burton & Gove appeared on the cover of the souvenir view album *Calgary The City Phenomenal* (1912).



Landscape paintings were produced to display real estate developments. This one of Medicine Hat, Alberta was created ca. 1912 by artists Burton & Gove for the F. M. Ginther Land Company. It is held by the Esplanade Arts & Heritage Centre, Medicine Hat (Accession no. 67.1).



“Canadian Pacific Railway exhibit at American Land and Irrigation Exposition, New York, New York”, 1911. [PD-31-8-37]. The middle painting *Bird's-Eye View Canadian Pacific Irrigated Lands Alberta* was signed "H. M. Burton, Calgary."



H. M. Burton, Self-Portrait. 1923.



Artist H. M. Burton painting "Mariner's Memories" Captain Douglas J. Strath (an original square-rigger captain) in his Australia studio, 1975.

H. M. Burton's Panoramic Views in Newspaper Adverts



Esri Canada, Esri, HERE, Garmin, FAO, NOAA, USGS, EPA, NRCAN, Parks Canada

Powered by Esri



Silver Heights, Calgary

This advertisement for Silver Heights development, "Situated on 17th Avenue, just one mile from New University" includes a view signed "Burton & Gove, 28 Cadogan Blk." It...



Shouldice Terrace, Calgary

Advertisement for Shouldice Terrace development being promoted by Henderson Land Co. View signed "H. M. Burton." Appears in Calgary Herald (1910, Nov. 11).



The Bronx, Calgary

Prominent Calgary developer William A. Lowry was promoting The Bronx real estate development in this Calgary Herald (1910, May 23) advertisement. A view of the area...



Parkdale Addition, Calgary

This advertisement for Parkdale Addition development being promoted by Scott & Hartrnft Ltd. was captioned, "Bird's eye view (looking south)... showing Parkdale and..."



St. George's Heights, Calgary

The appeal of the St. George's Heights development was advertised as being its proximity to downtown, the General Hospital and St. George's Island. A view signed "Burton & Gov..."



Springwell Park, Calgary

The Springwell Park development was being developed adjacent to and overlooking the C. P. R. Industrial Division. Advertisements such as this one in the Calgary Herald (1911, Oct....



Hubalta Park, Calgary

The view included in this Calgary Herald (1911, Mar. 21) advertisement for Hubalta Park being promoted by the North West Real Estate Co. took up nearly the entire...



Greater Hubalta, Calgary



Advertisements for the Canada West Colonization Company's Greater Hubalta development in east Calgary enticed buyers with the prospect that the area was destined...



Hubalta Extension, Calgary



Industrial Section, Calgary

The view in this advertisement was signed "Burton and Gove, Thomas Block, Calgary." It was created to advertise real estate for sale east of Calgary towards Chestermere Lake in...



Chestermere Heights, Chestermere, Alberta

This westward-facing view drawn by H. M. Burton in about 1911 was produced as an advertisement showing the location of the Chestermere Heights real estate development...



Chestermere Lake, Alberta

This view was produced by artists Burton and Gove and appeared as part of a Chestermere-Calgary Townsite and Development Co., Limited newspaper advertisement...



West Park, Red Deer, Alberta

Real estate agents Latimer & Botterill placed this advertisement in the Red Deer Advocate (1912, May 24) to advertise their West Park subdivision. The view of the properties was...



Three Hills, Alberta

This J. A. MacCullough newspaper advertisement (ca. 1911) contained a view of the Town of Three Hills signed "H. M. Burton." The advert's description indicated that Three Hills...



Bassano Heights, Bassano, Alberta

A Calgary Herald (1912, March 26) newspaper advertisement for Bassano Heights in Bassano, Alberta contained this view signed by artists "Burton and Gove." The properties...



Hutton, Alberta

This view of Hutton, Alberta drawn by "H. M. Burton, Calgary" was included in the 1911 "souvenir book" produced by the Jennings Publishing Company to promote the City of...



Gas City Subdivision, Medicine Hat, Alberta

Developer Hugh Smith's Gas City subdivision lots for sale in Medicine Hat were advertised in the Calgary Herald (1911, March 11) using a view of the properties signed by "H. M. Burton."



Kipling Park, Medicine Hat

Kipling Park was a subdivision of one-acre tracts in Medicine Hat that were being sold by Jones & Mehaffe, Sales Agents, Calgary. An advertisement for the development appeared...